

Axis Geospatial LLC

www.axisgeospatial.com

info@axisgeospatial.com

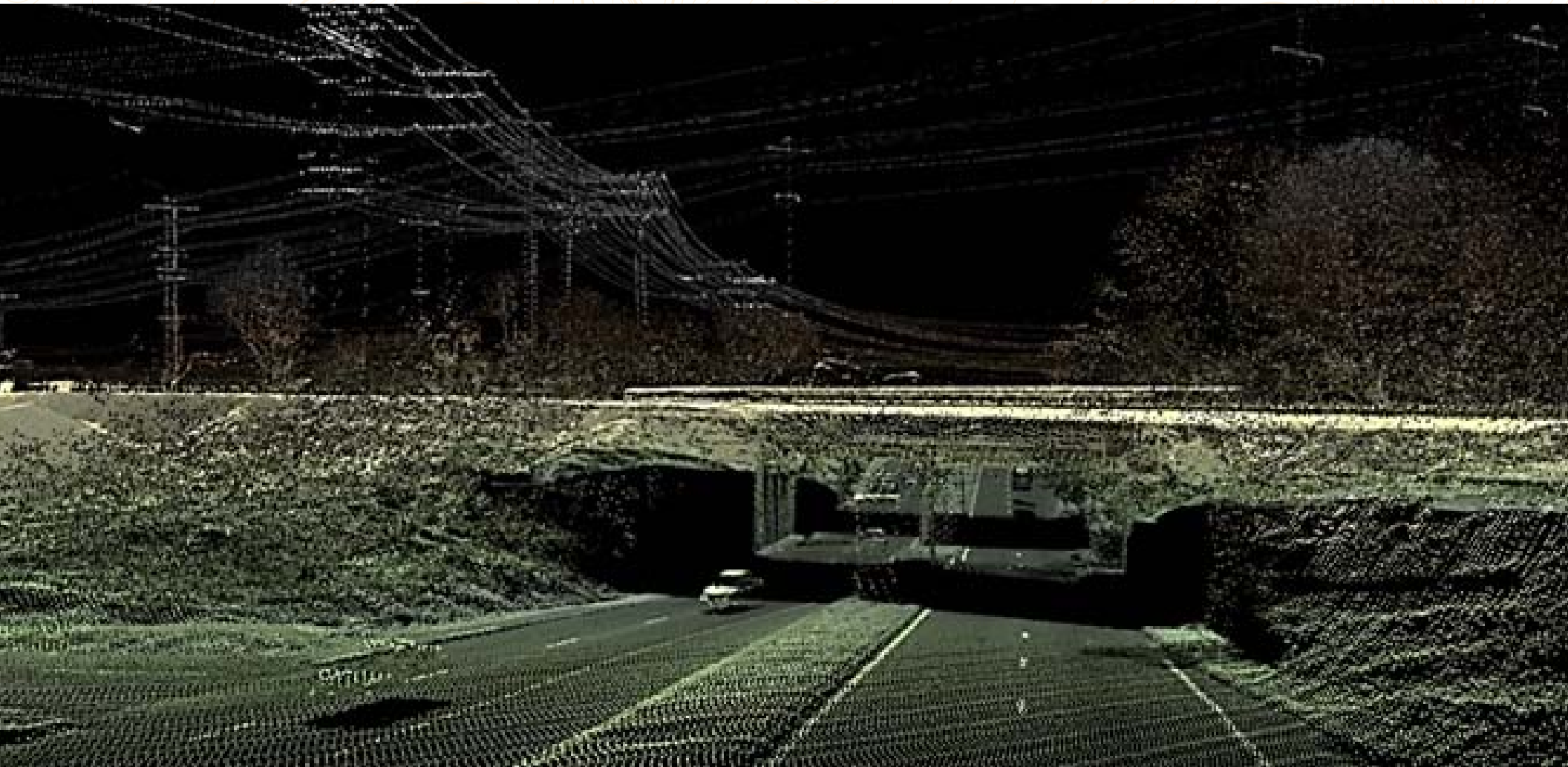
Easton, MD 21601

410-822-1441

Highway Mapping

WITH HD-LIDAR TECHNOLOGY

axis
geospatial





Map busy, complex corridors quickly & efficiently with complete Airborne LiDAR services provided by Axis Geospatial

Axis Geospatial helps you to:

- Enhance efficiency, speed & reliability
- Avoid interrupting roadways/railways services with Airborne LiDAR
- Collect ground features such as curbs, ditches, power lines, bridges, tunnels, drainage structures & more
- Quickly extract terrain elevations
- Quickly & easily locate asset inventories – bridges, overpasses, culverts, lighting, building structures and more
- Capture small drainage features, such as ditches and areas where ponding of water may occur
- Manage vegetation to ensure the safety & reliability of your highways & roads
- Determine land suitability, including resources and proximity to buildings
- Differentiate subtle changes in slope/grade on roadways and railways
- Determine best way to serve existing & future travel demands
- Plan and design new transportation corridors

What's your level of detail?
Whether you're looking for a basic elevation model or 3-D feature extraction, tell us what you need, we'll figure out the best technology solution and deliver!

With this technology not only will you know the terrain – you will know the entire landscape of your project.

Detailed maps provide a great starting point for your design & monitoring projects.

We offer the following:

- Fast turn-around time from collection to delivery
- Safely survey high speed & heavily congested traffic corridors, eliminating traffic interference
- Easily map rugged, vegetated, dangerous and inaccessible areas

“Easily capture elevation detail on curbs, bridges & overpasses (±.08' H&V Accuracy)”



Call now to Schedule your Live Demo today! See the detail available through Airborne LiDAR technology.

axis
geospatial